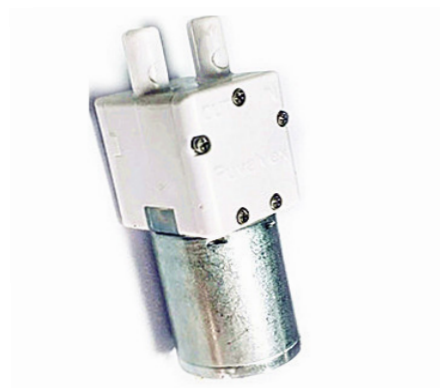


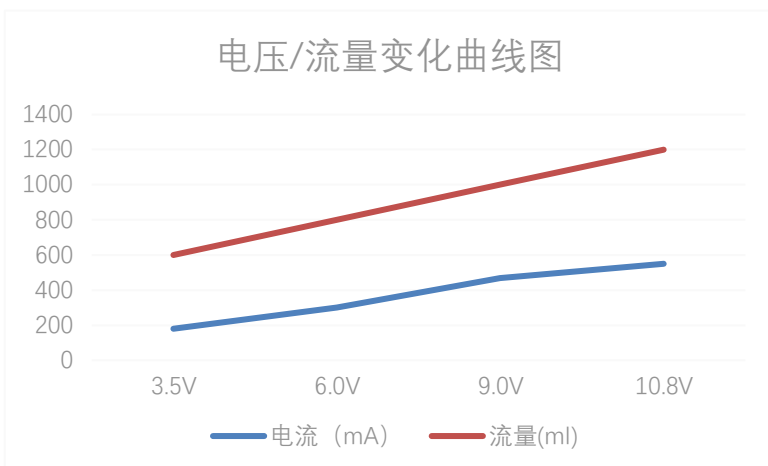
1.0L 水泵 1.0L Water Pump

型号 model: PV-WP28-BA12-A1

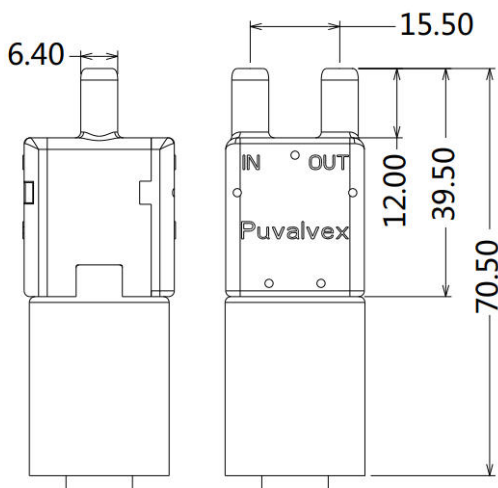
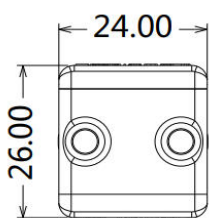
产品照片 Photo:



特性曲线 Characteristic curve:



产品尺寸 Dimension:



产品性能 Characteristic:

额定电压	Rated voltage	DC6-24V
最大功率	Maximum power	9W
流量	Water flow	>1000ml/min
寿命测试	Life test	>1000H(8s on, 2s off)
扬程	Head of delivery	>5M
吸程	Suction head	>1M
噪音	Noise	<60db

产品特性 Product feature:

1. 专利产品,
2. 性能稳定, 长寿命, 测试后流量压力衰减小
3. 耐高温高湿环境
4. 防污防杂质性能好, 可抽果粒橙等颗粒液体